

Stinging Insect Identification Guide



Some stinging insects pose a bigger threat than others, sending more than 500,000 people to the emergency room each year. It is important for tenants to understand the difference between such insects and their nesting characteristics to keep stinging to a minimum. We recommend contacting your management team to send out a trained pest professional who will be able to accurately identify a pest species, but you can use this guide to help differentiate how to handle stinging insects if they try to nest in or around your living space.

Most importantly, if you discover a stinging insect issue around your home. Please inform the property management team immediately so that they can contact pest professionals.



Bee Identification

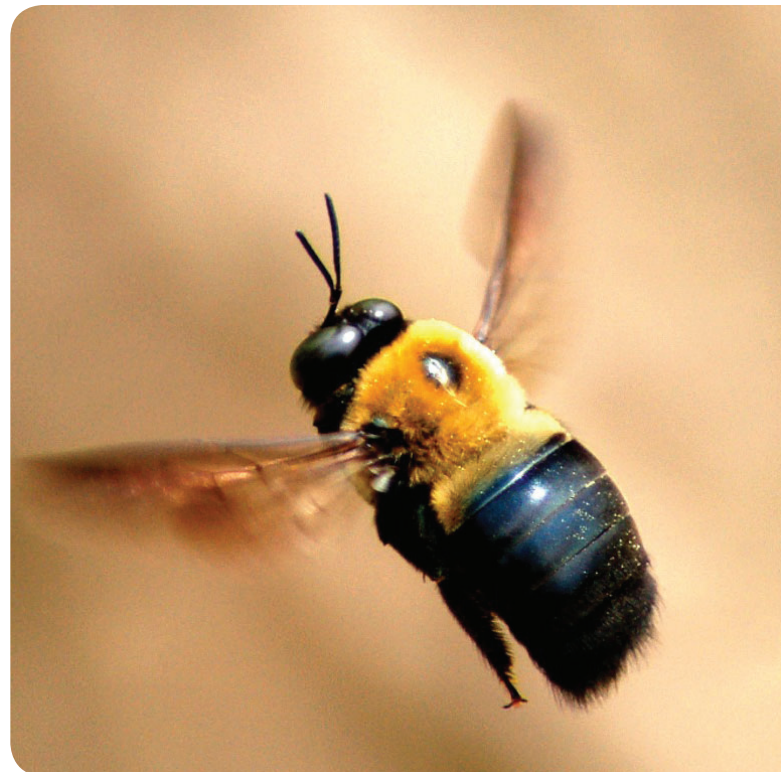


Bumble Bee

- 1/4" to 1 Inch in size
- Black and Yellow Markings with an overall "fuzzy" appearance
- Nest: Usually built in the ground or a dense grass clump. Made out of pllen clumps. Can use abandoned nests to make a new one.
- Considered a beneficial insect for pollinating flowers
- Can sting if threatened

Carpenter Bee

- 1/2" to 1 Inch in size
- Black and Yellow Markings but is mostly bare and shiny
- Nest: Bore into wood, where they make holes for rearing their young. Tend to prefer decaying or weathered wood over fresh or painted wood.
- Threat to structural damage overtime if not eradicated
- Males often territorial and may hover in ones face aggressively, but they have no stinger. Females do have a potential to sting but rarely do.



Honey Bee

- 1/2" to 5/8" of an Inch in size
- Black and orange-brown stripes with a slightly "fuzzy" appearance
- Nest: Social insects that live in colonies in hives ranging in 20,000 to 80,000 individuals.
- Non-aggressive but are defensive when the colony is threatened
- When nests are discovered, contact a professional



Bee Nest Identification



Bumble Bee Nest

Often nest in the ground or in wall voids. Nest does not overwinter.



Carpenter Bee Nest

Often nest in untreated wood. Woodpeckers will often add additional damage to wood by trying to get to young.



Honey Bee Nest

Will usually nest in voids but can in the open. Nests can become active each year. Beekeepers may be hired to handle as they are a very beneficial insect.

Hornet Identification



Baldfaced Hornets

- 1/2" to 5/8" of an Inch in size
- Black with white covering most of the face and a long body
- Nest: Usually built in air out of paper carton. They are usually found in exposed spaces like trees, utility poles, and overhangs. Nests are usually larger being up to 14 inches wide and 24 inches tall.
- This hornet is aggressive and won't hesitate to attack. With a painful sting full venom that consists of about 5% acetylcholine.
- If found contact pest professional immediately

European Hornets

- from 3/4" to 1 Inch in size
- Brown with yellow abdominal stripes and a pale face
- Nest: These paper carton nests are usually covered in a brown paper envelope as protection. Typically found in voids like hollow trees, hollow walls, and attics.
- They are not as aggressive as the baldfaced hornet, however they will get hostile as needed to defend their nest or their food source.
- They can sting repeatedly unlike a honeybees who only sting once



Hornet Nest Identification



Baldfaced Hornet Nest

Often start constructing nests in May and are large by mid to late summer. Nests don't survive the winter. Do not disturb these nests. Contact professionals immediately.



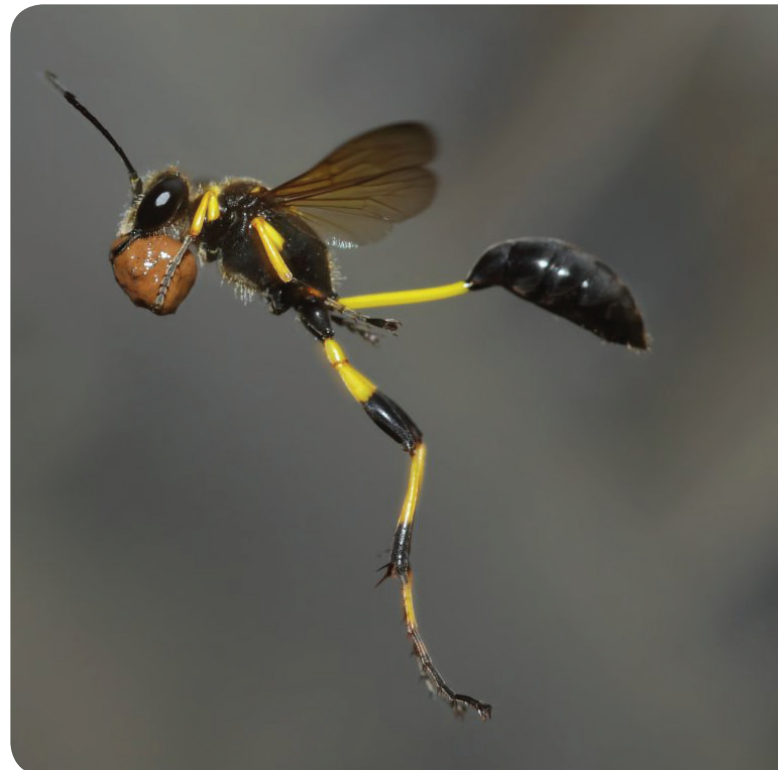
European Hornet Nest

Often nest in hollow trees or wall voids. Can be aggressive if threatened. Contact a professional for assistance.

Wasp Identification

Mud Dauber

- 1/2" to 1 Inch in size
- Usually black with occasional metallic/yellow markings. Have long and slender waist.
- Nest: Solitary wasp that makes nests in tubes of mud and usually prey on spiders.
- Non-aggressive but should still be handled with care. Other more aggressive insects may take over the nest after the mud dauber is no longer active.





Paper Wasp

- 5/8" to 3/4" of an Inch in size
- Brownish with yellow or red markings
- Nest: Often built in residential yards and made of a paper like material described to have an umbrella shape hanging from limbs, shrubs, ceilings, etc.
- Often fly around their nest and are usually only aggressive when the nest is threatened
- Due to their nesting locations, residents are more likely to be stung by them
- Contact a professional when nests are discovered

Yellowjackets

- Between 3/8" to 5/8" of an Inch in size
- Black and Yellow social wasp that is commonly mistaken as a bee
- Nest: Usually in wall voids or underground.
- Often seen frustrating guests at picnics and parks as they are attracted to meat, fruit, and sweet drinks.
- Considered the most dangerous stinging insect in the US as they will readily sting when disturbed. So do not swat at them.
- Contact a professional when nests are discovered



Wasp Nest Identification



Mud Dauber Nest

Often in areas that aren't often disturbed. Made up of tubes of mud that look like organ pipes. Less aggressive but should still ask a professional for assistance.



Paper Wasp Nest

Often found around homes and made up of a paper material and has an umbrella like shape. Do not disturb the nest. Call a professional.



Yellowjacket Nest

Often nest in the ground but can in wall voids. This is a highly aggressive species so be sure to avoid them and contact professionals anytime you come across a nest.

Stinging Insect Tips

Remember it is not advised to attempt to remove a stinging insect nest on your own and doing so can be extremely dangerous. Instead, contact your property management team or a licensed pest professional for further instruction and always steer clear of nests, even when seemingly inactive.